

Pure Sine Wave Inverter

STI series



STI series is a sine wave power frequency inverter which can convert 12V or 24V DC to 220VAC or 230VAC 50Hz based on full digital and intelligent design. It features high reliability, high efficiency, concise outline, small volume, full protection functions, easy installation and operation. The inverter can be applied in many fields especially for solar photovoltaic power system.

Features:

- ◆ Complete isolation-type inverter technology, noiseless output
- ◆ Adoption of advanced SPWM technology, pure sine wave output
- ◆ Dynamic current loop control technology to ensure inverter reliable operation
- ◆ Wide DC input voltage range
- ◆ Excellent EMC design
- ◆ Low output harmonic distortion (THD \leq 3%)
- ◆ LED indicators for input voltage range, load power range, normal output & failure state
- ◆ Optional energy saving mode
- ◆ Wide working temperature range (industrial level)
- ◆ Continuous operation at full power

Electronic protection:

- ◆ Output Short Circuit
- ◆ Input low/over voltage
- ◆ Input reverse polarity
- ◆ Inverter abnormal protection
- ◆ Overload
- ◆ Overheating protection



Optional energy saving mode

Big isolated transformer

Output socket (option) :



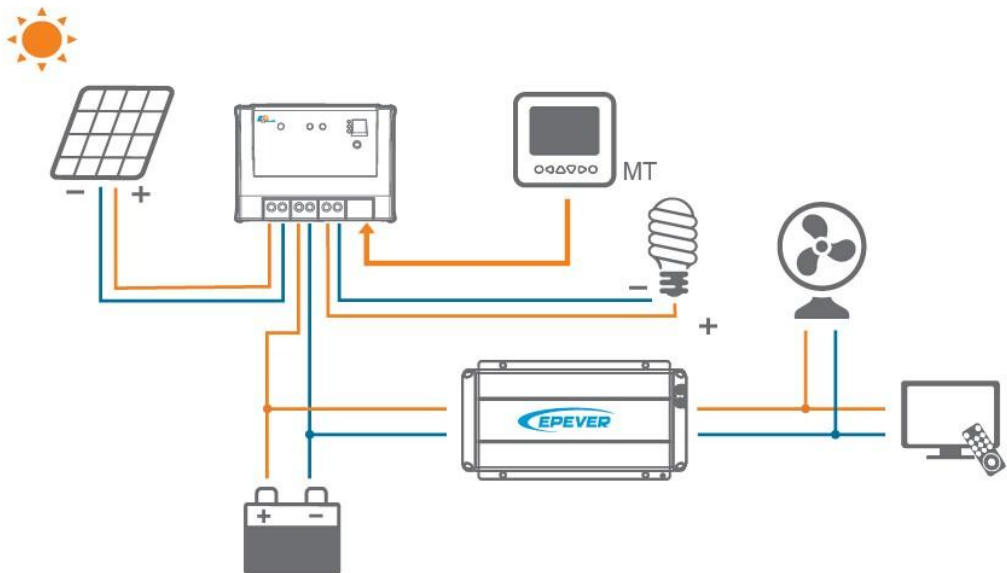
Universal



European



Australia/New Zealand



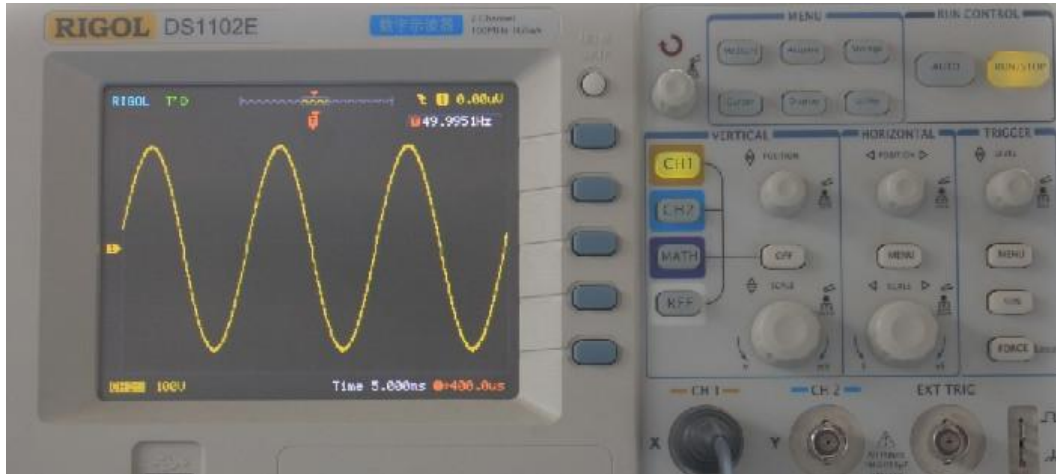
Technical specifications

| Model | STI200-12-220 | STI200-24-220 | STI300-12-220 | STI300-24-220 | STI500-12-220 | STI500-24-220 | STI700-24-220 | STI1000-24-220 | STI1000-48-220 | |
|----------------------------------|---|---------------|---------------|---------------|---------------|---------------|---------------|-------------------------|---------------------|--|
| Nominal battery voltage | 12V | 24V | 12V | 24V | 12V | 24V | 24V | 24V | 48V | |
| Input voltage range | 10.5~16V | 21~32V | 10.5~16V | 21~32V | 10.5~16V | 21~32V | 21~32V | 21~32V | 42~64V | |
| Consumption no load(ON) | ≤4W | ≤5W | ≤5W | ≤6W | ≤5W | ≤6W | ≤8.5W | ≤10W | ≤12W | |
| Consumption no load (Saving) | ≤2W | ≤2W | ≤2W | ≤2W | ≤2W | ≤2.5W | ≤3W | ≤3W | ≤4W | |
| Output voltage | AC220V±3% | | | | | | | | | |
| Continuous power | 200VA | | 300VA | | 500VA | | 700VA | 1000VA | | |
| Power 10sec | 300VA | | 450VA | | 750VA | | 1050VA | 1500VA | | |
| Power 1.5sec | 400VA | | 600VA | | 1000VA | | 1400VA | 2000VA | | |
| Surge power | 640VA | | 960VA | | 1600VA | | 2240VA | 3200VA | | |
| Output mode | Single Phase | | | | | | | | | |
| Wave form | Pure Sine Wave | | | | | | | | | |
| Frequency | 50Hz±0.2% | | | | | | | | | |
| Distortion THD (resistive load) | ≤ 3% | ≤ 2% | ≤ 3% | ≤ 2% | ≤ 5% | ≤ 2% | ≤ 3% | ≤ 3% | ≤ 2% | |
| Efficiency at rated power | ≥81% | ≥85% | ≥81% | ≥87% | ≥81% | ≥87% | ≥87% | ≥87% | ≥89% | |
| Max. efficiency | ≥88% | ≥89% | ≥90% | ≥91% | ≥91% | ≥93% | ≥93% | ≥93% | ≥94% | |
| Dimension | 315*166*101mm | | | | 325*187*112mm | | | 335×23 2×123. 3mm | 373×232×123.3 mm | |
| Net weight | 4.5kg | | 5.3kg | | 7.3kg | | 9.4kg | 11.8kg | | |
| Working temperature | -20℃~ +50℃ | | | | | | | | | |
| Humidity | < 95% (non-condensation) | | | | | | | | | |
| Altitude | < 5000m(Derating to operate according to IEC62040 at a height exceeding 1000 m) | | | | | | | | | |

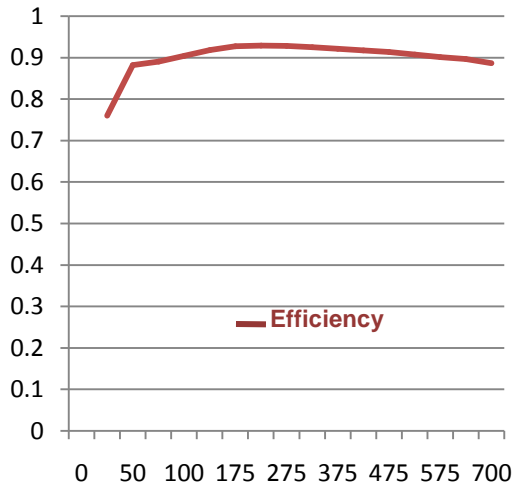
Technical specifications

| Model | STI200-12-230 | STI200-24-230 | STI300-12-230 | STI300-24-230 | STI500-12-230 | STI500-24-230 | STI700-24-230 | STI1000-24-230 | STI1000-48-230 |
|----------------------------------|---|---------------|---------------|---------------|---------------|---------------|---------------|-----------------|----------------|
| Nominal battery voltage | 12V | 24V | 12V | 24V | 12V | 24V | 24V | 24V | 48V |
| Input voltage range | 10.5~16V | 21~32V | 10.5~16V | 21~32V | 10.5~16V | 21~32V | 21~32V | 21~32V | 42~64V |
| Consumption no load(ON) | ≤4W | ≤5W | ≤5W | ≤6W | ≤5W | ≤6W | ≤8.5W | ≤10W | ≤12W |
| Consumption no load (Saving) | ≤2W | ≤2W | ≤2W | ≤2W | ≤2W | ≤2.5W | ≤3W | ≤3W | ≤4W |
| Output voltage | AC230V±3% | | | | | | | | |
| Continuous power | 200VA | | 300VA | | 500VA | | 700VA | 1000VA | |
| Power 10sec | 300VA | | 450VA | | 750VA | | 1050VA | 1500VA | |
| Power 1.5sec | 400VA | | 600VA | | 1000VA | | 1400VA | 2000VA | |
| Surge power | 640VA | | 960VA | | 1600VA | | 2240VA | 3200VA | |
| Output mode | Single phase | | | | | | | | |
| Wave form | Pure sine wave | | | | | | | | |
| Frequency | 50Hz±0.2% | | | | | | | | |
| Distortion THD (resistive load) | ≤ 3% | ≤ 2% | ≤ 3% | ≤ 2% | ≤ 5% | ≤ 2% | ≤ 3% | ≤ 3% | ≤ 2% |
| Efficiency at rated power | ≥81% | ≥85% | ≥81% | ≥87% | ≥81% | ≥87% | ≥87% | ≥87% | ≥89% |
| Max. efficiency | ≥88% | ≥89% | ≥90% | ≥91% | ≥91% | ≥93% | ≥93% | ≥93% | ≥94% |
| Dimension | 315×166×101mm | | | | 325×187×112mm | | | 335×232×123.3mm | 2×123.3mm |
| Net weight | 4.5kg | | 5.3kg | | 7.3kg | | 9.4kg | 11.8kg | |
| Working temperature | -20℃~ +50℃ | | | | | | | | |
| Humidity | < 95% (non-condensation) | | | | | | | | |
| Altitude | < 5000m(Derating to operate according to IEC62040 at a height exceeding 1000 m) | | | | | | | | |

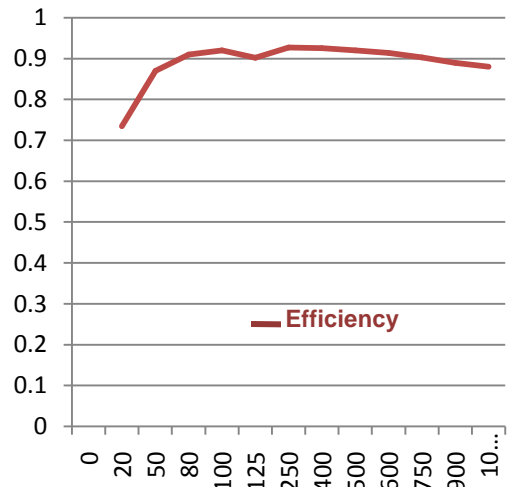
Wave form:



Efficiency curve :



STI700-24-220



STI1000-24-220



BEIJING EPSOLAR TECHNOLOGY CO.,LTD.
 Add: BLDG #18, CO.PARK ,NO.8 HEYING ROAD,CHANGPING DISTRICT, BEIJING, CHINA
 Tel: 010-82894962 / 82894112
 Fax: 010-82894882
 E-mail: info@epsolarpv.com